



AVAILABILITY™

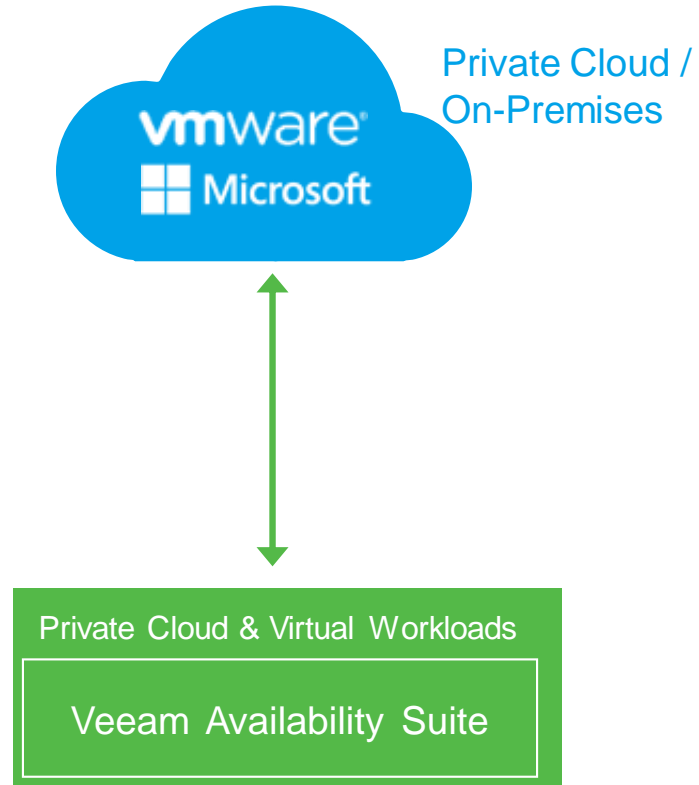
for the Modern Data Center
Veeam Cloud Connect



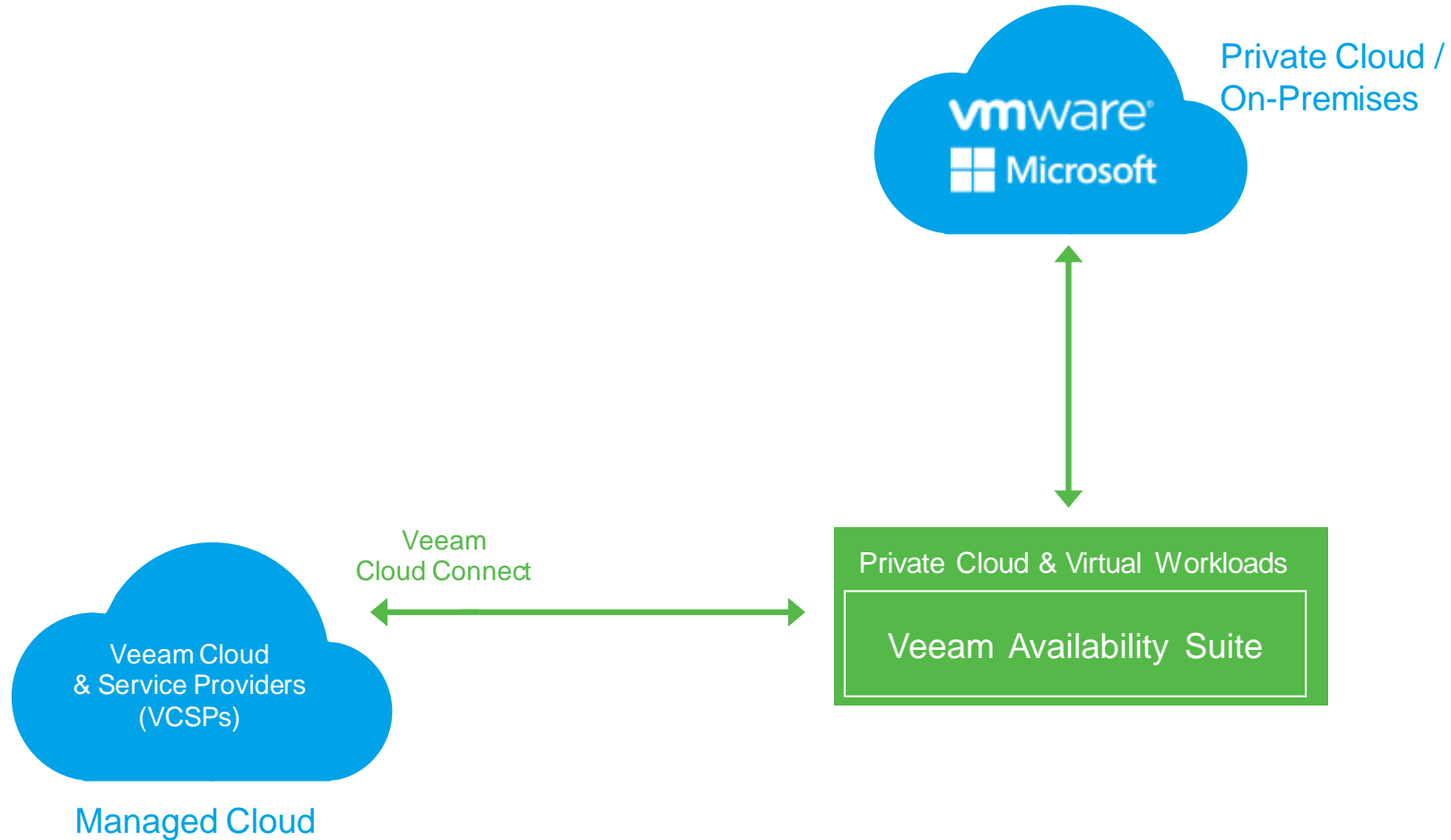
Benedikt Däumling
Systems Engineer
benedikt.daeumling@veeam.com



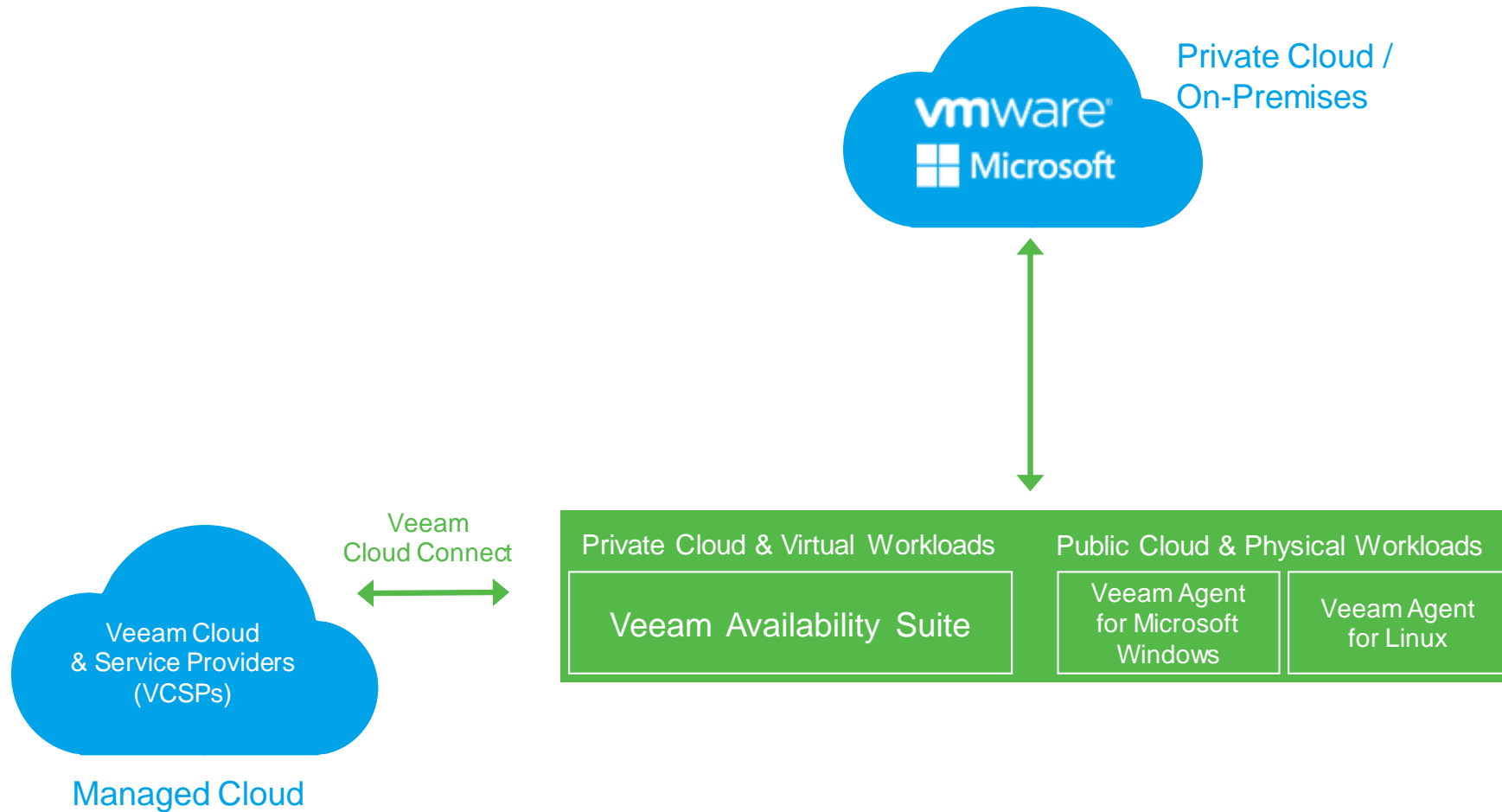
Veeam Availability Platform for the Hybrid Cloud



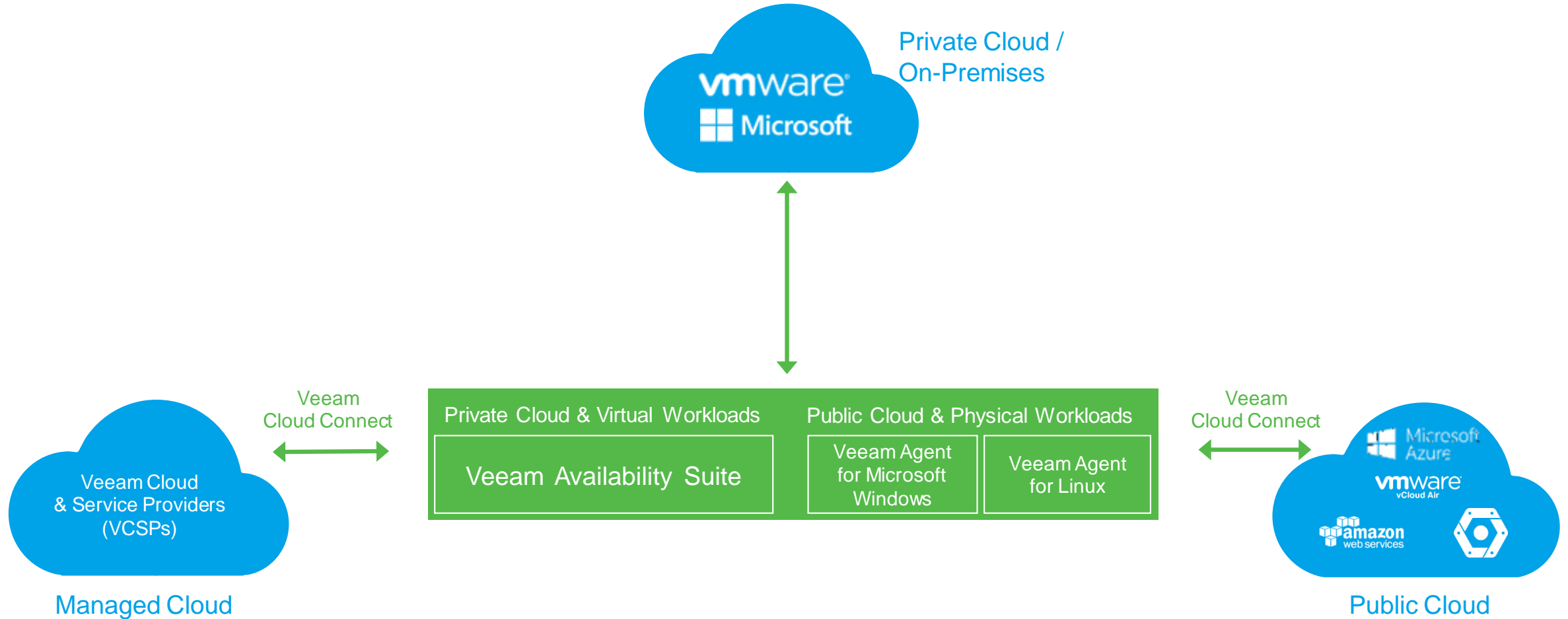
Veeam Availability Platform for the Hybrid Cloud



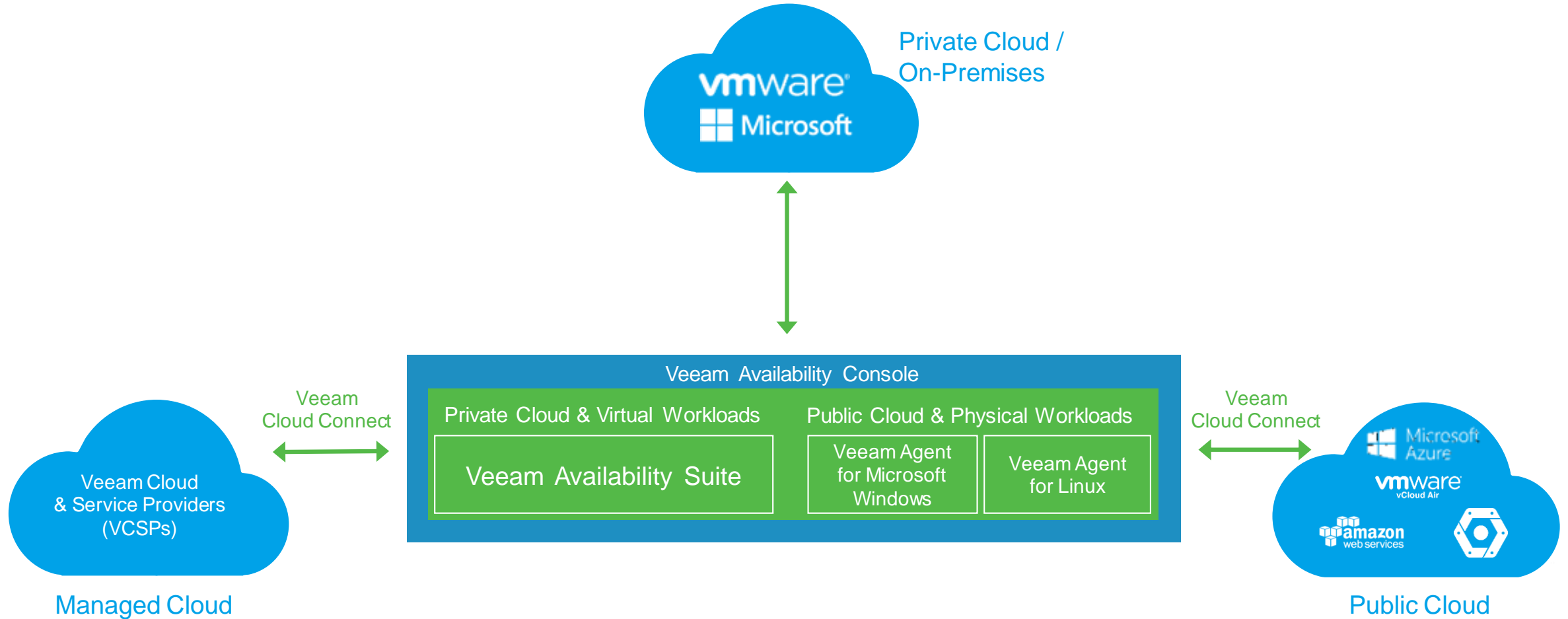
Veeam Availability Platform for the Hybrid Cloud



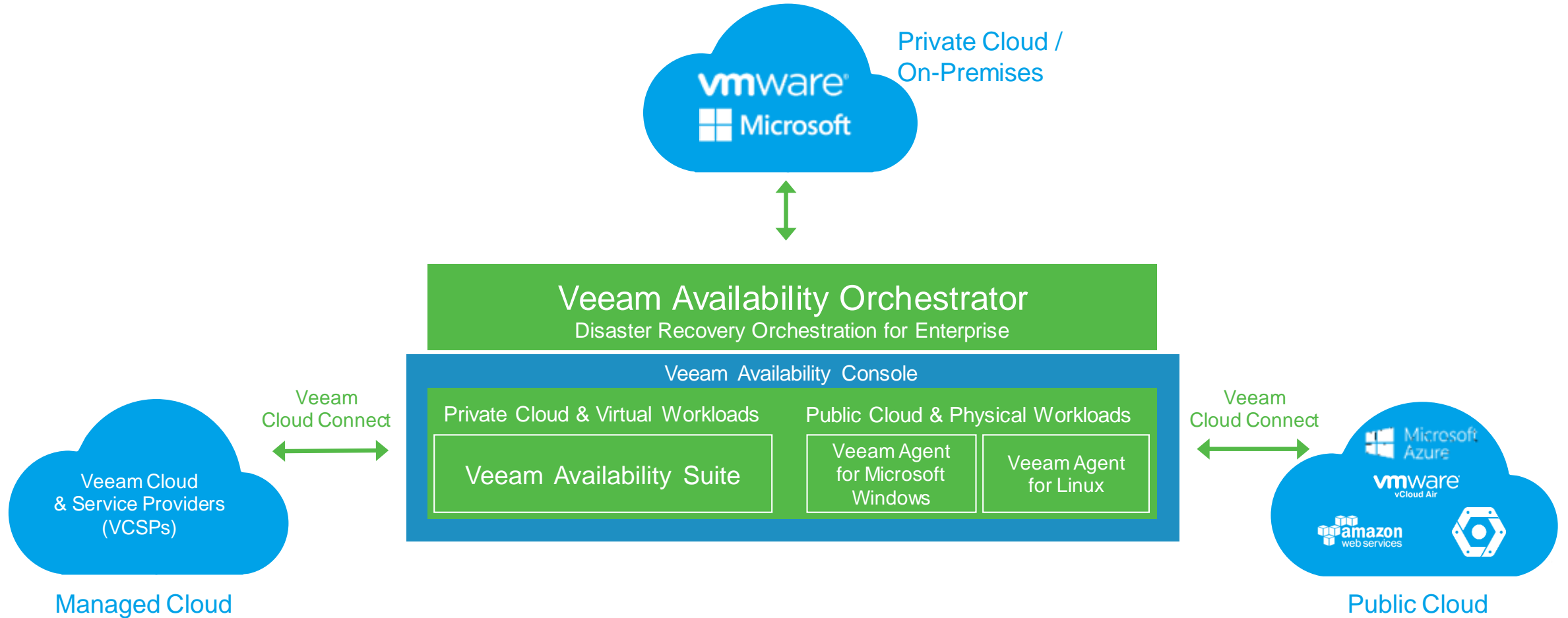
Veeam Availability Platform for the Hybrid Cloud



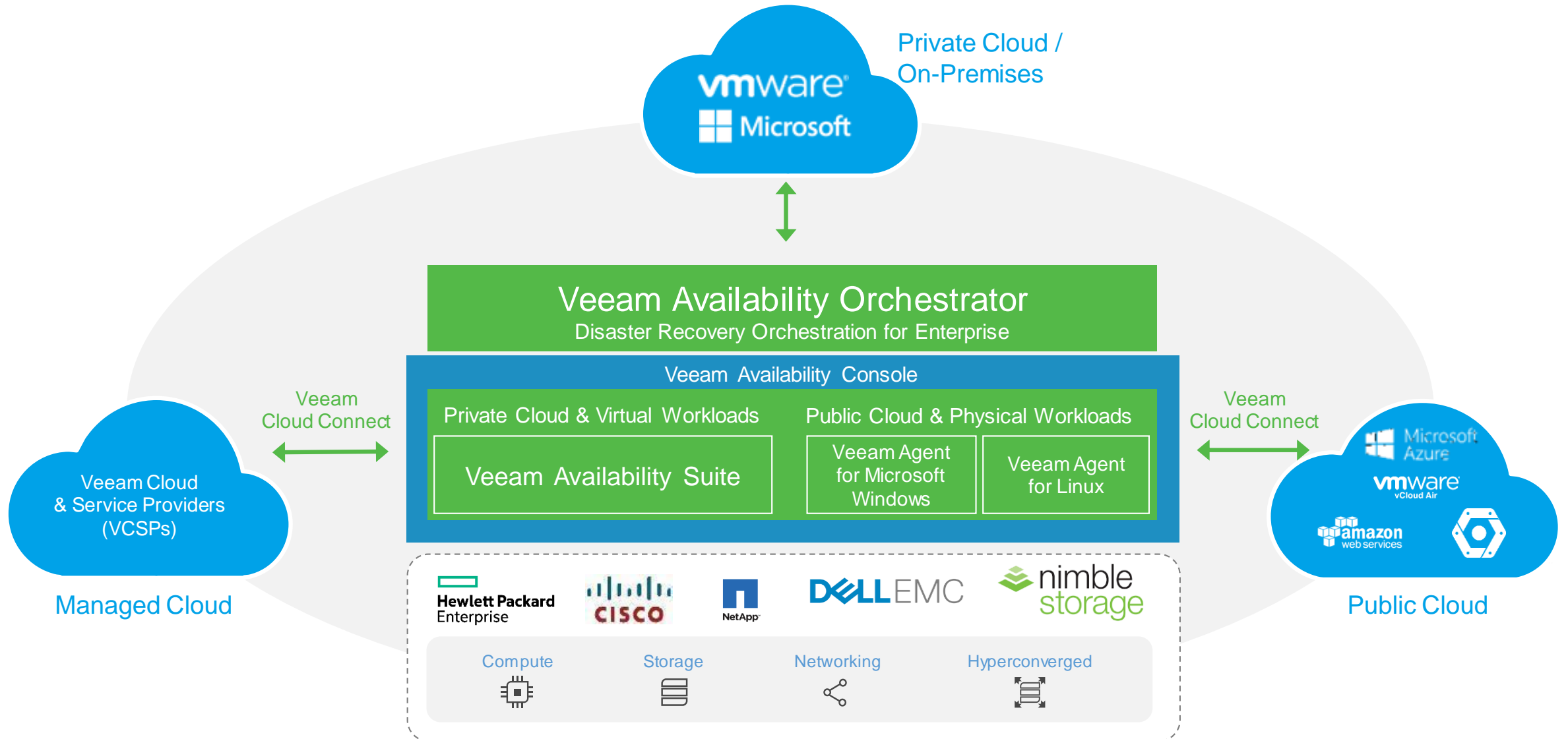
Veeam Availability Platform for the Hybrid Cloud



Veeam Availability Platform for the Hybrid Cloud



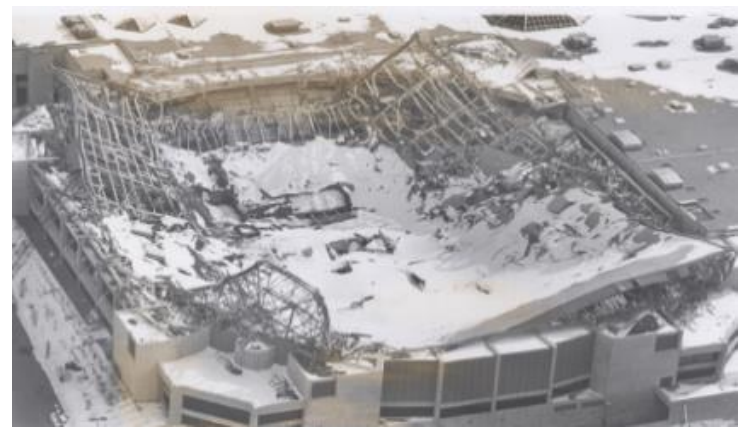
Veeam Availability Platform for the Hybrid Cloud



Veeam Cloud

Veeam Cloud Services





TESLA CRYPT

All your important files are encrypted.

At the moment, the cost of private key for decrypting your files is 2.5 BTC \approx 550 USD.
Your Bitcoin address for payment: [1234567890123456789012345678901234567890](https://www.paypal.com/payto?email=paypal@teslacrypt.com)

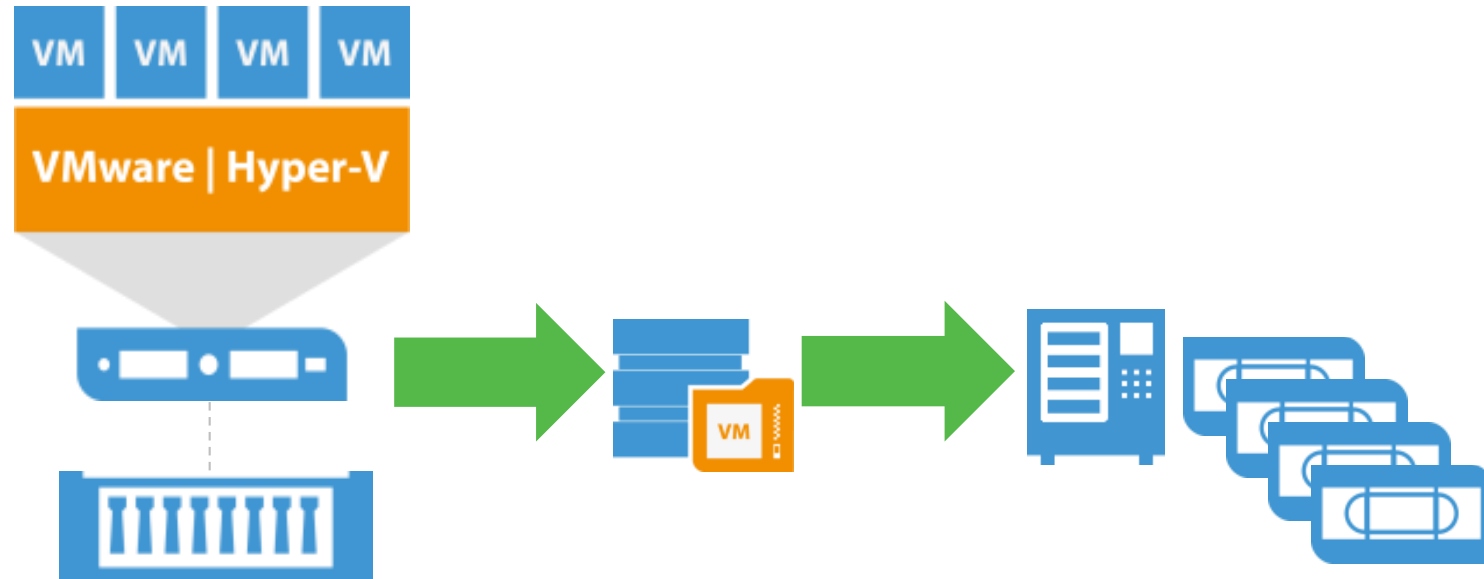
[PURCHASE PRIVATE KEY WITH BITCOIN](#)

You can also make a payment with PayPal My Cash Card

In case of payment with PayPal My Cash Card your total payment is 1000 USD (2 PayPal My Cash Cards)

3-2-1

Lokale Infrastruktur
des Kunden



3

copies



2

different media



1

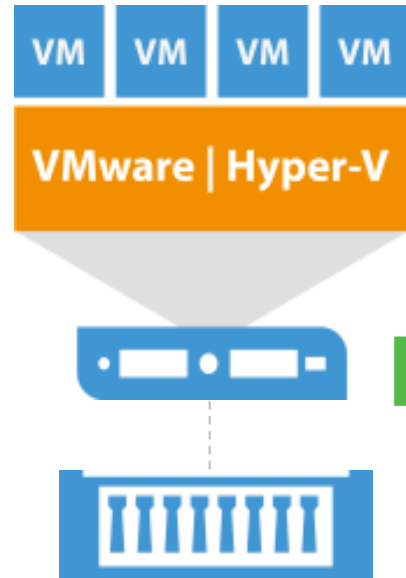
off site



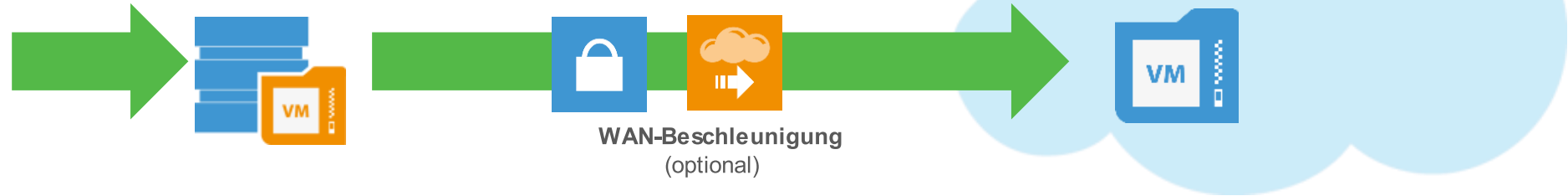


Cloud Connect Backup

Lokale Infrastruktur
des Kunden



Dienstleister



3

copies



2

different media



1

off site



High Availability

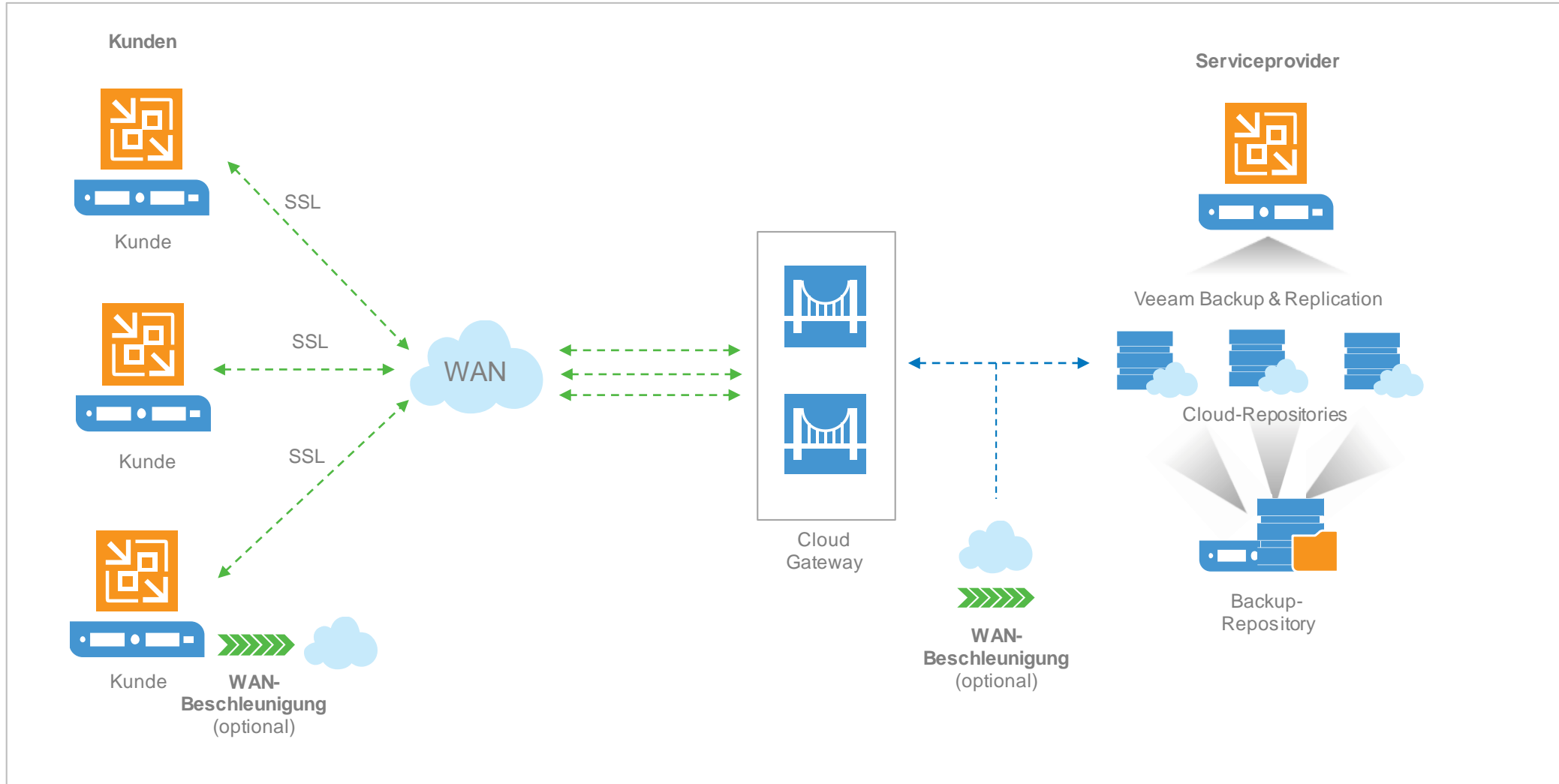


Worst case

1. Neue Location finden
2. Hardware beschaffen (Server, Storage, Netzwerk)
3. Hardware aufbauen
4. Software beschaffen und installieren
5. Konfiguration
6. Beginn mit Restore
7. Fine-tuning

~~Wichtigste?~~
~~Wichtigste?~~

Architektur Übersicht



Veeam Availability Console

Veeam Availability Console

amustbdaeumling Configuration

All Companies

All Locations

Monitoring

OVERVIEW

ACTIVE ALARMS

TOP COMPANIES

BACKUP INFRASTRUCTURE

Management

BACKUP JOBS

FAILOVER PLANS

Clients

COMPANIES

DISCOVERY

Billing

SUMMARY

INVOICES

BACKUP SERVERS BACKUP AGENTS

Status: Job Type (All) Job Server Type (All)

Job name Start Stop Retry Enable Disable Download Logs Export CSV... Export XML...

JOB NAME	SERVER NAME	JOB STATUS	↑	TYPE	LAST RUN	DURATION	TRANSFERRED DATA	...
Backup Job 23	HQ-VBR1	-		Backup	-	No Info	0	
Demo_test	HQ-VBR1	-		Backup	-	No Info	0	
Hyper-V - Replication to Clou...	HQ-VBR1	-		Replication	-	No Info	0	
VMware - Backup of MS SQL ...	HQ-VBR1	-		SQL Log Backup Job	-	No Info	0	
VMware - Veeam Explorers_c...	HQ-VBR1	-		Oracle Log Backup Job	-	No Info	0	
Hyper-V Test 2k16	HQ-VBR1	Failed		Backup	1/12/2017 6:42 PM	1 hours 3 minutes	0.2 MB	
SureBackup Job 2	HQ-VBR1	Failed		SureBackup	1/19/2017 12:24 AM	16 minutes 26 seconds	-	
VMware - Sandbox for Oracle...	HQ-VBR1	Failed		SureBackup	12/16/2016 5:38 PM	6 minutes 26 seconds	-	
Backup Job 22	HQ-VBR1	Failed		Backup	1/29/2017 10:35 PM	1 minutes 59 seconds	0	
VMware - Exchange replica v...	HQ-VBR1	Failed		SureBackup	12/21/2016 4:59 PM	31 seconds	-	
VMware - Backup of Fault Tol...	HQ-VBR1	Success		SQL Log Backup Job	1/29/2017 12:45 AM	23 hours 59 minutes	0.0 MB	
VMware - Backup of MS SQL ...	HQ-VBR1	Success		SQL Log Backup Job	1/29/2017 12:05 AM	24 hours 14 seconds	0.0 MB	
VMware - Veeam Explorers S...	HQ-VBR1	Success		SQL Log Backup Job	1/29/2017 12:00 AM	24 hours 1 seconds	0.2 MB	
VMware - Veeam Explorers O...	HQ-VBR1	Success		Oracle Log Backup Job	1/29/2017 12:00 AM	24 hours 1 seconds	15.8 MB	
VMware - Backup in Virtual A...	HQ-VBR1	Success		Backup	1/30/2017 12:10 AM	17 minutes 33 seconds	11.8 GB	
Backup to Tape	HQ-VBR1	Success		Backup to Tape	1/30/2017 9:00 AM	20 minutes 31 seconds	3.5 GB	
VMware - Replication	HQ-VBR1	Success		Replication	1/30/2017 12:35 AM	12 minutes 16 seconds	1.2 GB	
VMware - Backup to ExaGrid	HQ-VBR1	Success		Backup	1/30/2017 12:25 AM	35 minutes 54 seconds	11.9 GB	
VMware - Backup of Fault Tol...	HQ-VBR1	Success		Backup	1/30/2017 12:45 AM	4 minutes 5 seconds	192.2 MB	
VMware - Backup to ReFS	HQ-VBR1	Success		Backup	1/30/2017 12:20 AM	3 minutes 40 seconds	1.5 GB	

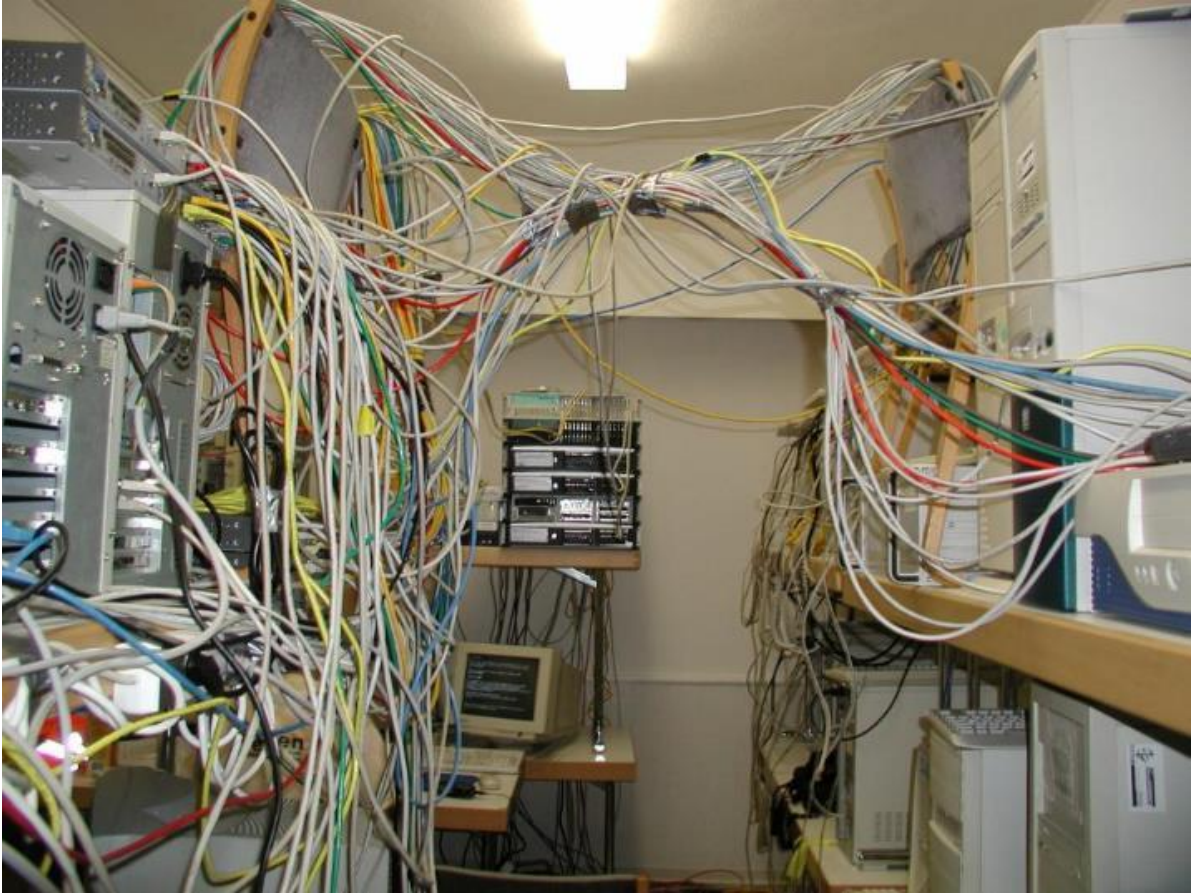
Cloud Connect Replication

Lokale Infrastruktur
des Kunden

Infrastruktur des
Serviceproviders



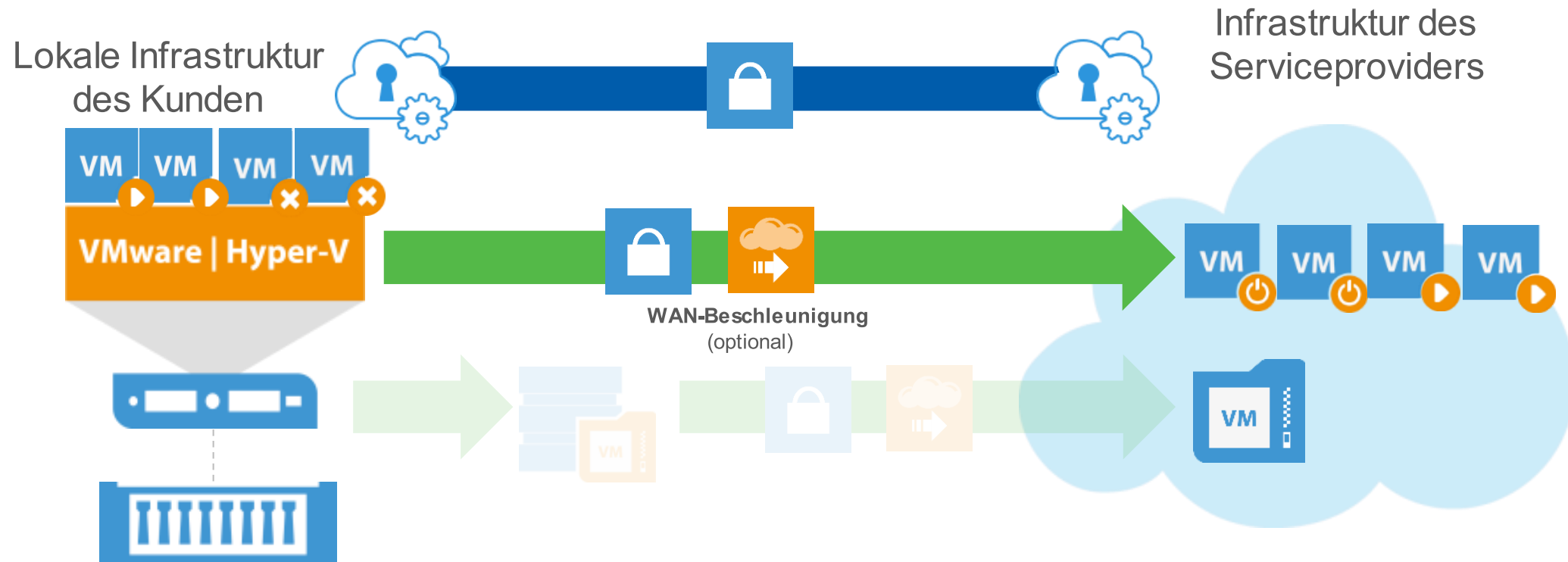
Schluss mit den größten Problemen



Netzwerk

- Routing muss neu konfiguriert werden
- Komplexe VPNs
- Benutzerdefinierte Regeln
- Netzwerküberlappung
- ...

Cloud Connect Replication



Möglichkeiten für Partner

- „Cloud“ wird durch Partner ersetzt

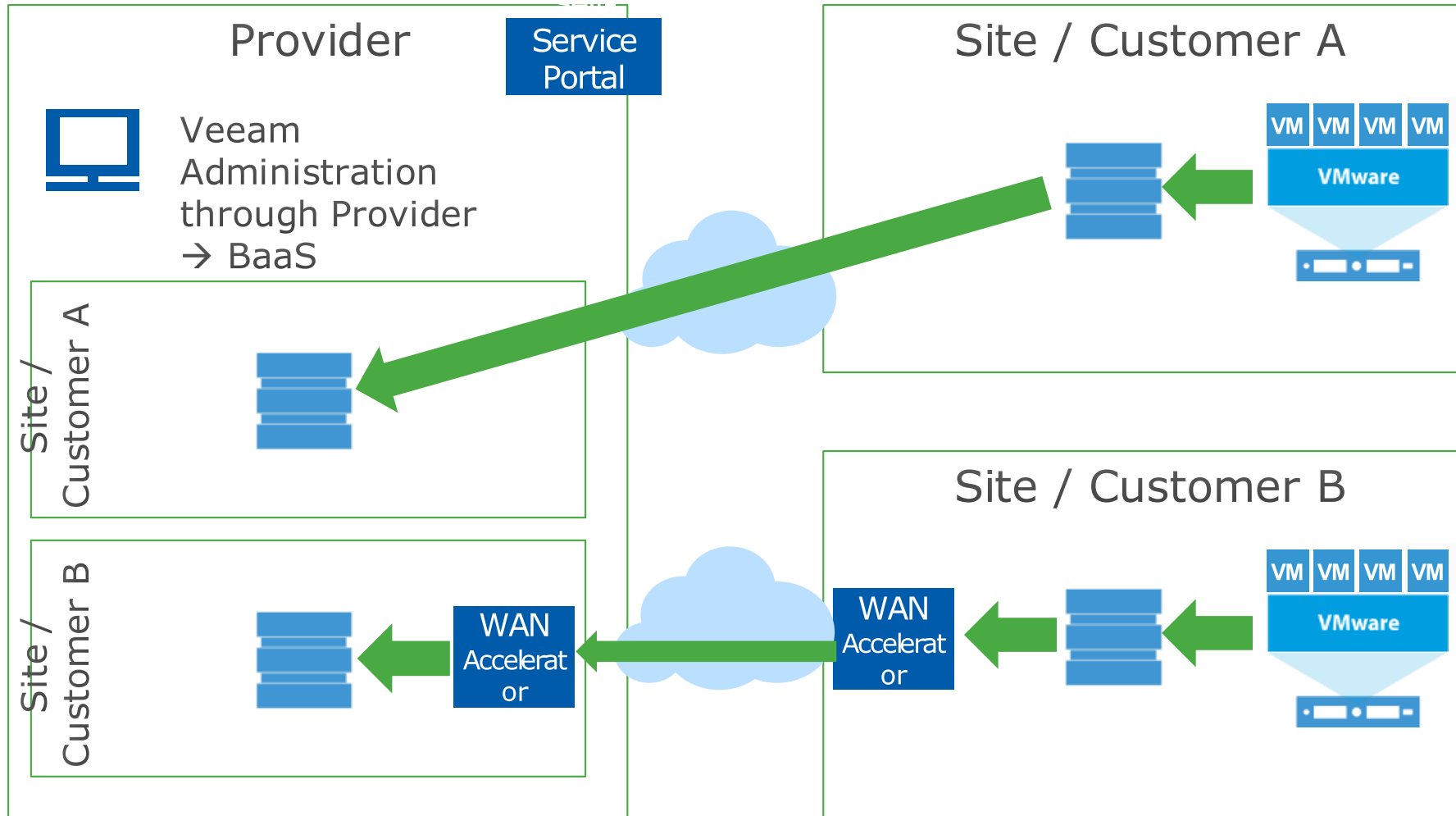
Möglichkeiten für Partner



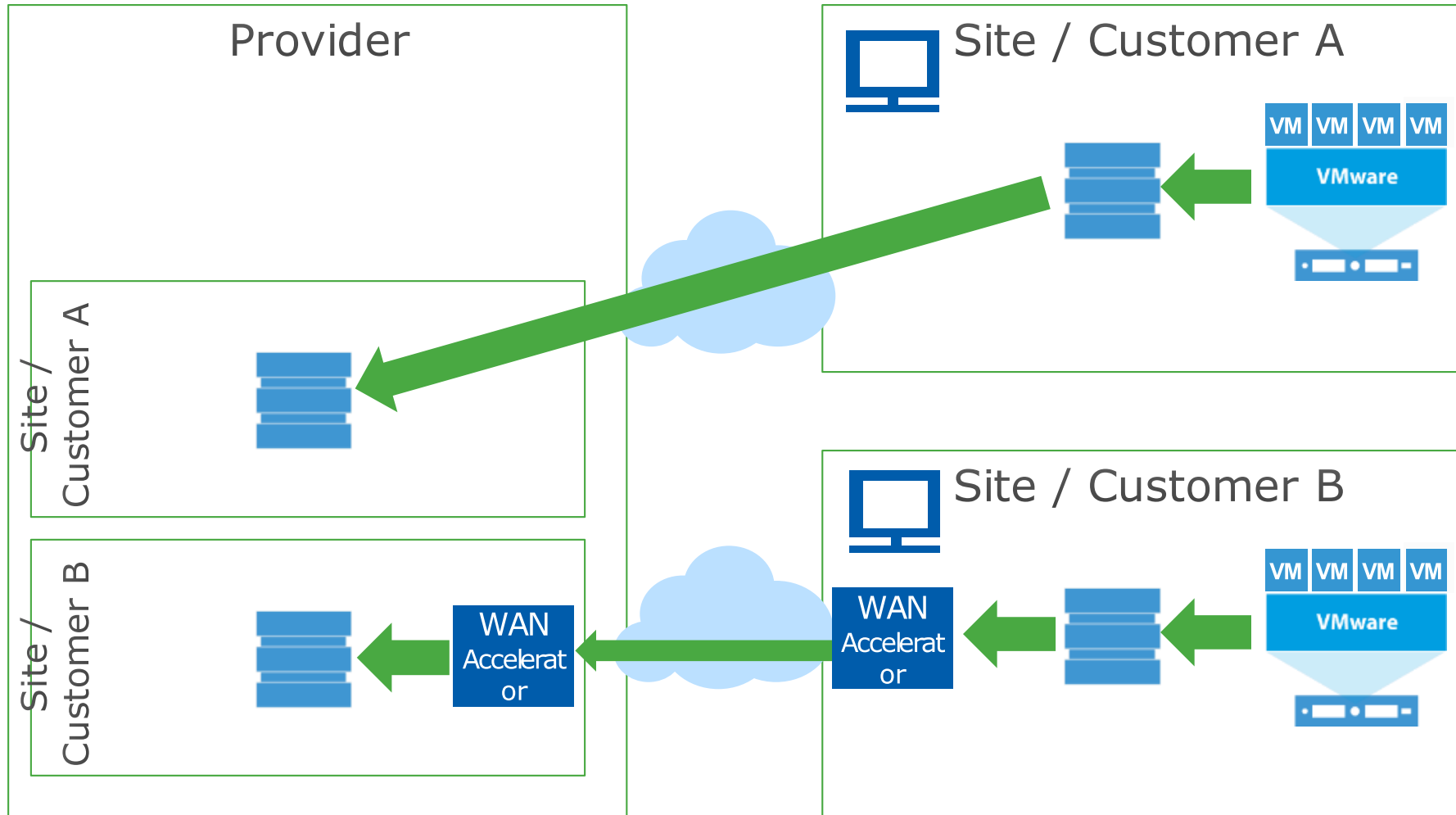
Möglichkeiten für Partner

- „Cloud“ wird durch Partner ersetzt
- Managed Backup
- Einfach skalierbar
- Einfache Bereitstellung
- Laufender Umsatz

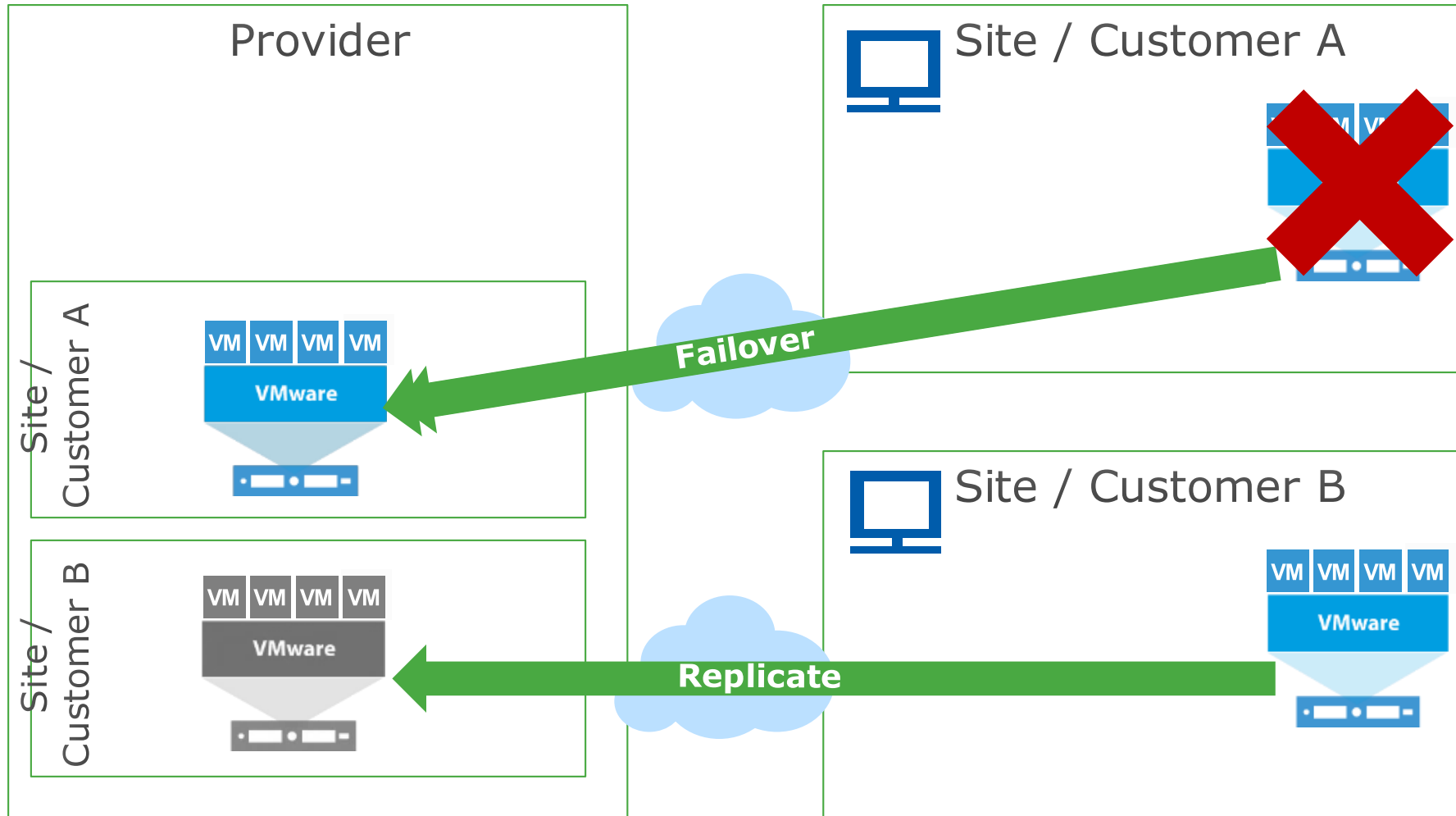
Szenario 1: Backup as a Service



Szenario 2: Repository as a Service



Szenario 3: DR as a Service



Noch Fragen ?

